

LX 200

Luxmeter



• Instantaneous illuminance

Displaying of instantaneous / maximum / minimum values.

• Relative illuminance

Allows a relative measurement to a reference point to quantify a light input or an illuminance decrease.

• Evolution of illuminance according to weather conditions

Storage of temporal evolution of illuminance for the follow up of environment conditions.

• Cartography of illuminance – Spatial representation

Coloured representation according levels obtained for printing of report (on a computer such as PC).

• Uniformity

Calculation of the min / ave ratio for determination of illuminance uniformity at workstation according to standards*.

• *As per following standards :

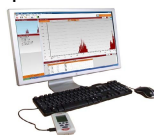
NF EN 12464-1 – Lighting of workplaces (inside)

NF EN 12464-2 – Lighting of workplaces (outside)

NF EN 12193 – Lighting of sports facilities

• Supplied with LLX200 software

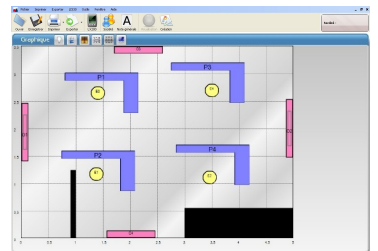
Operating software for data processing and printing of reports.



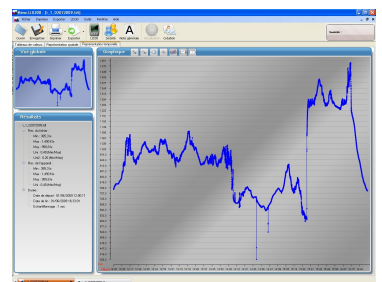
LX200 hand-held luxmeter, self-contained and automatic is specially designed to illuminance measurement. It allows storage of datasets for processing on a computer via the **LLX200** software.



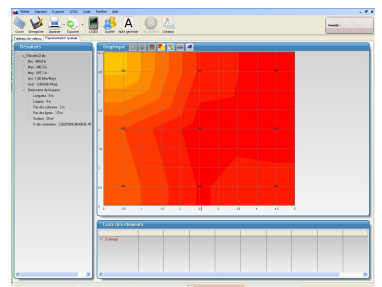
Determination of the illuminance uniformity of a local with graphic representation of workstations and luminaries



Following temporal evolution of illuminance of a workstation or a journey



Illuminance cartography with coloured nuance of a workstation (sports facilities)



■ Illuminance measuring range

- ♦ from 0.1 to 200 000 Lux

Display	Unit	Resolution	Accuracy
0.1 à 10.0	lx	0.1	0.1 lux
10.0 à 99.9	lx	0.1	1%
100.0 à 999.9	lx	0.1	1%
1000 à 9999	lx	1	1%
10.00 à 99.99	klx	10	1%
100.0 à 200.0	klx	100	1%

- ♦ from 0 to 18585 fc

Display	Unit	Resolution	Accuracy
0.00 à 1.00	fc	0.01	0.01 fc
1.00 à 99.99	fc	0.01	1%
100.0 à 999.9	fc	0.1	1%
1000 à 9999	fc	1	1%
10.00 à 18.58	kfc	10	1%

■ Supplied with ...

- **LX200** housing with silicon photodiode sensor and glass filter correction.
- Transport case
- 3 LR3-AAA batteries
- Calibration certificate
- User manual
- **LLX200** software

■ Optional accessories

- Extension for remote cell, 5 m length
- Battery module, 5 days autonomy
- AC adapter USB type

■ Metrology

LX200 instrument is calibrated on a specific optical bench. It comes with its calibration certificate. Our standard reference instruments are duly linked to COFRAC.

■ Technical features

Measuring range	from 0.1 to 200 000 Lux from 0.01 to 18585 fc
Spectral response	as per standard photopic curve V(λ) NF C 42 -710 Class B
Error limit V(λ) (f1)	< 6%
True cosine evaluation (f2)	< 6%
Linearity (f3)	< 5%
Measurement capability*	from 04h30 to 99 days
Display	backlit LCD graphic 128x64.
Working temperature	from 0°C to +50°C
Storage temperature	from 0°C to +50°C
Housing dimensions (without sensor)	120 x 58 x 34 mm
Weight (housing+sensor+battery)	185 gr
Mini-USB plug	for USB power supply adapter and data transfer
Power supply	3 batteries 1.5V type LR3-AAA
Autonomy	72 hours minimum, continuous operation
Electromagnetic compatibility	according to 89/336/CEE
Conformity	as per RoHS

*according to the mode (uniformity, temporal or cartography)



www.kimo.fr



EXPORT DEPARTMENT
Tel : + 33. 1. 60. 06. 69. 25 - Fax : + 33. 1. 60. 06. 69. 29
e-mail : export@kimo.fr

Distributed by :

RoMiotto **RoMiotto Instrumentos de Medição Ltda**
Instrumentos de Medição
Rua São Leonardo, 187 - Freguesia do Ó - São Paulo - SP
Cep: 02803-000 | Fone.: (11) 3976-4003 - Fone.: (11) 3999-7737
www.romiotto.com.br | E-mail: info@romiotto.com.br