

DB 300/1
Sound level meter



Integrating-averaging with storage function



DB300/1 sound level meter respects the most recent international standards and brings to the user a high comfort in use.

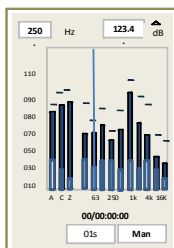
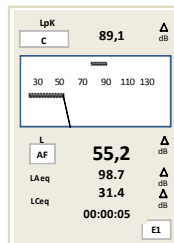
From the simple sound level measurement to the frequency analysis in real time, **DB300/1** covers the most applications in the finding of solutions to get better the noise environment

DB300/1 stores the measurement datasets that can be then transferred in a computer with the LDB23 software.

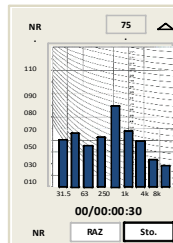


Main measured values

- The weighted noise level : **LXY**
- The equivalent continuous level : **LXeq**
- The peak pressure level : **LUpk**
- The noise exposure level : **LXE**



- Real time analyser by octave bands – 16 Hz to 16 kHz



- Values and graphic representation of the **NR** comfort criteria

I/O Interface

- Detection of sensitive levels for alarm activation
- Analogue output DC : 0-10V:0 -137dB

Other information

- Minimum and maximum values, peak values
- Statistical distribution of the measured values : **L01-L10-L50-L90-L95**

Business application

- Environment
- Monitoring and emergencies
- Industry
- Noise spectrum 1/1 octave
- Noise of machines and NR evaluation curves
- Process monitoring, conformity check
- Noise to workstation

Data visualization

DB300/1 is supplied with the **LDB23** software for display data and measurement report printing.



TECHNICAL FEATURES

Standards

Sound level meter : NF EN 61672-1 (2002)- NF EN 60651 (1979) – NF EN 60804 (2000) – CEI 61260

CE conformity : EN 61010 – EN 61000 generic and as per product standard

Metrology

Accuracy : Class 1 - NF EN 61672-1

Microphone type : Electret – ½" - Sensibility : 45 mV/Pa

Measuring type : Free-field

Measurement dynamic : Lp / Leq : 117 dB - Lpk : 54 dB

Single dynamic range Lp and Leq / Lpk : 20-137 dBA
25-137 dBC (Z) / 83-137 dBC (Z)

X frequency weighting : A – C – Z

Multi-spectrum frequency analysis : filters by octave bands – 16
Hz // 16 kHz

Y frequency weighting : F (fast) – S (slow) – I (impulse) – U : Peak

Logging time for short Leq (DI) : 1/16s -1/8s-1/4s-1/2s-1s to 60 s
(1s step)

Measured values : LXY – LXYmax – LXYmin - LXeq,T – LXeq,DI – LXE
– LXeq,DI,max – LXeq,DI,min

Statistic indices LAN LAeq samples : L01 – L10 – L50 – L90 – L95 –
1 dB resolution.

Measured values simultaneously : All according to LXY conventional
mode or LXeq integrator mode

Detection and percentage of overload : Alarm graphics and
calculation of percentage during the storage

Sound level meter

Preamplifier..... removable – extension of 3-5-10 m – on request

Screen..... graphical display 240 x 160 pixels – LCD monochrome 16 levels – digital and analog
display – 3D effect on display

Keypad..... 8 sensitive keys

Clock..... permanent, saved by internal battery – accuracy better than 0.01%

Memory module removable Micro SD card 2Go

Environment..... from -10 °C to +50 °C

Humidity..... from 0 to 90% HR

Size (L x l x e)..... 270 x 70 x 40 mm

Weight (with batteries)..... 355 gr

Fixing..... Insert at rear for fixing on tripod

Operating

Measurement modes..... conventional and start/stop integrating – integrating analyser with storage – NR comfort
criteria - S1 + S2 calculator

Storage and measurement capacity..... Lp-Leq start/stop mode : unlimited

Leq-St mode : according to elementary logging time (from 1/16e s to 60s)

Memory capacity with frequency analysis by full octave band :

- Base Leq 1s : 135 days to share from 1 to 99 periods.

- Base Leq 1/16°s : 8 days to share from 1 to 99 periods.

Interface I/O..... Output DC : 0-10V / 0-137dB

Output for alarm activation : TTL level 3.3 V

Measurement launching..... By keyboard

Power – Autonomy..... Li-Ion battery : minimum autonomy : more than 24 h at 20 °C

Guarantee..... 2 years

Supplied with

- Li-Ion battery – 3 x AA batteries coupling device - windscreen
- Transport case
- USB type charger - Adapter
- Calibration certificate
- USB type transfer cable
- User manual
- LDB200 software

Optional accessories

- Extensions for preamplifier : 3-5-10 m
- Tripod
- Acoustic calibrator class 1 (NF EN 60942:2003)
type : **CAL300**
- Jack cables for I/O interface



Acoustic
calibrator

www.kimo.fr



EXPORT DEPARTMENT

Tel : + 33. 1. 60. 06. 69. 25 - Fax : + 33. 1. 60. 06. 69. 29

e-mail : export@kimo.fr

Distributed by :

RoMiotto
Instrumentos de Medição

**RoMiotto Instrumentos
de Medição Ltda**

Rua São Leonardo, 187 - Freguesia do Ó - São Paulo - SP
Cep: 02803-000 | Fone.: (11) 3976-4003 - Fone.: (11) 3999-7737

www.romiotto.com.br | E-mail: info@romiotto.com.br